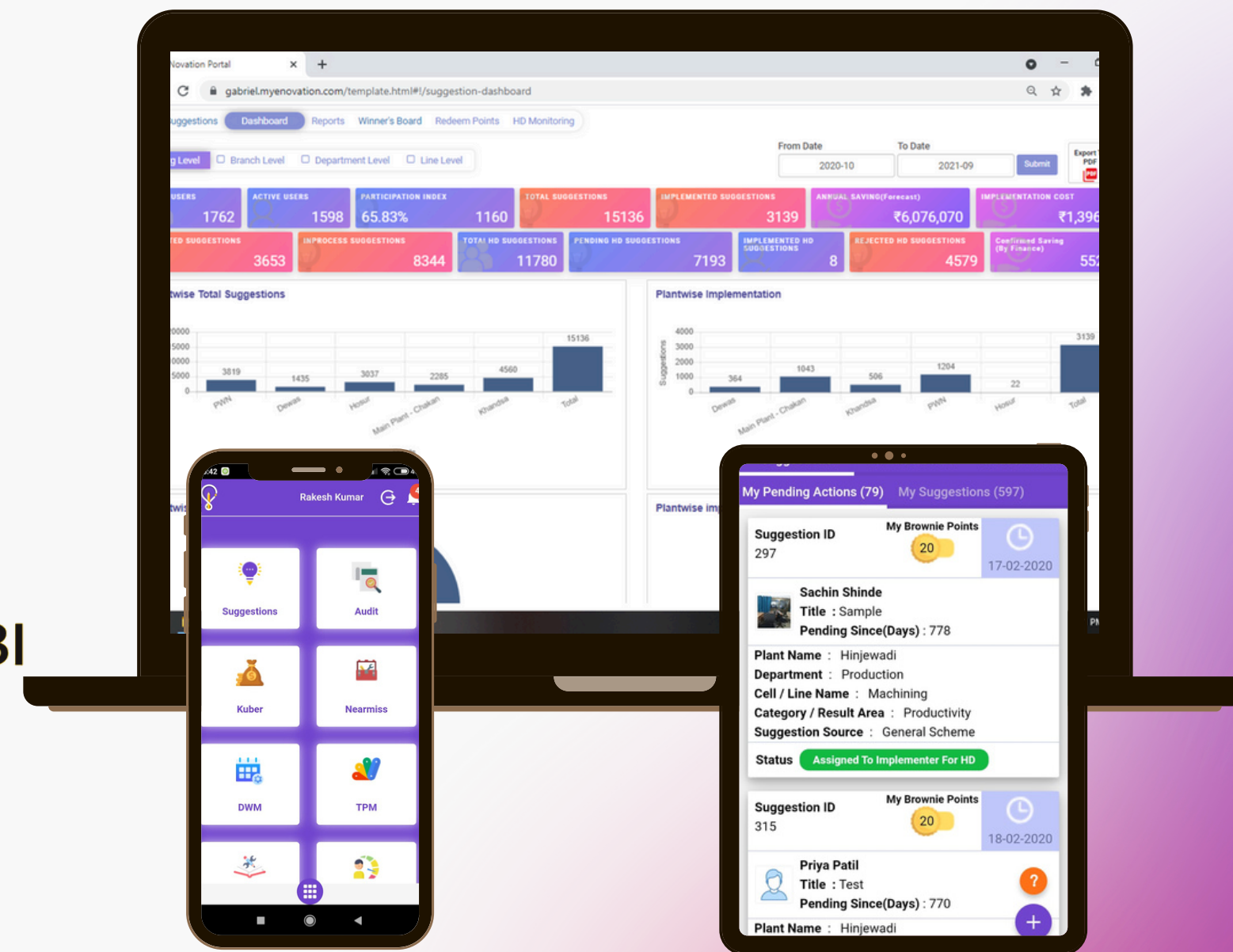
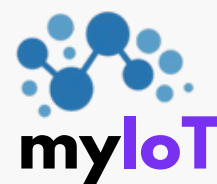




AI-Powered Digital Operation Excellence Platform



Who are we

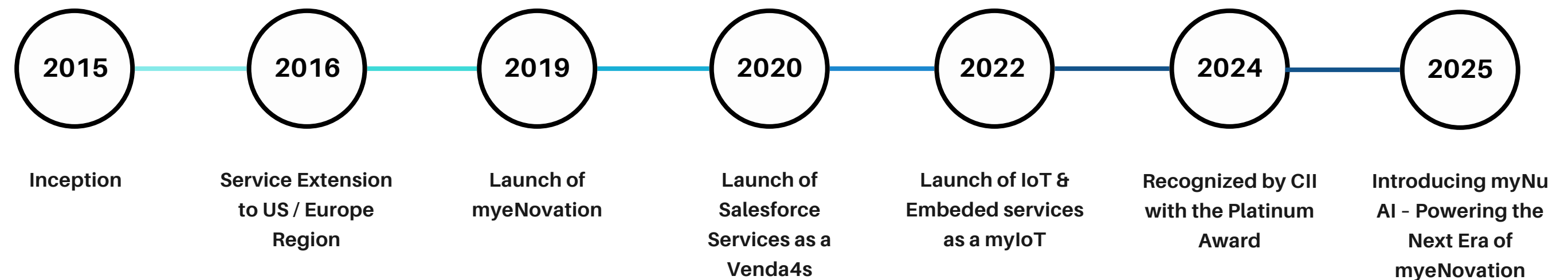
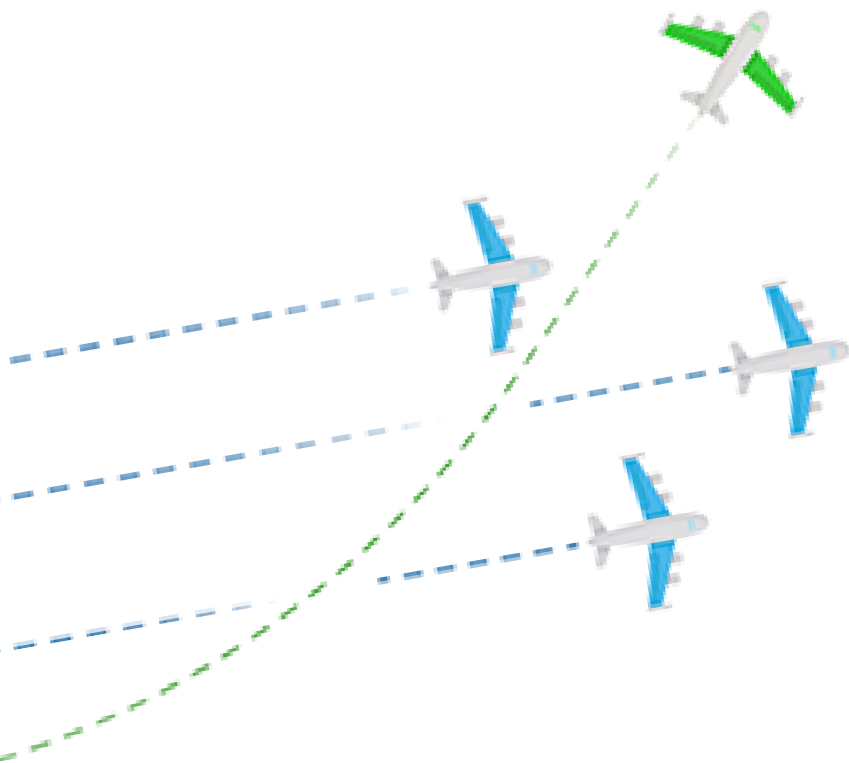


IT Services and Solutions company, providing digital enablement and product development offerings. In an age when technology plays a critical role in business strategy, we are pioneering industry-specific solutions and new age digital practices that enable rapid growth, rich value, and specific business outcomes.

Our customer services are driven by 4 P core values i.e

Passionate about the work, **Perfection** in work, **Pride** about the work, and **Prompt** in delivering work.

Our core values make us a trusted partner that can own the problem and deliver technology solutions faster than ever.



Process Automation

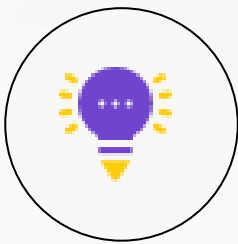
Product Suits



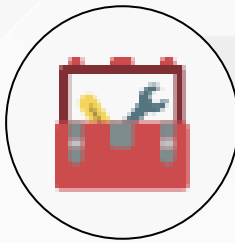
myeNovation

Digital Platform for
Operation Excellence
processes

At Greentin Solution, our renowned platforms, myeNovation and Excelleta, stand as pillars of excellence in manufacturing and RFQ/Costing processes within the manufacturing domain.



Suggestions



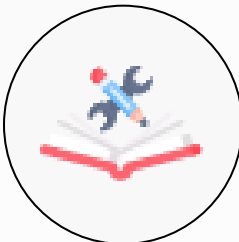
Nearmiss



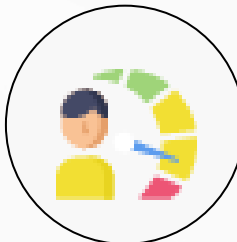
Auditor



Kuber



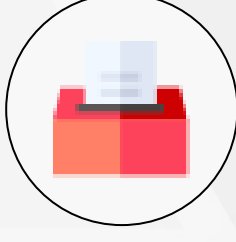
Skill Matrix



PMS



TPM



Concern Box

Add Call Master

Add New

Delete

FROM DATE *
01-09-2024

Show 10 entries

	SR.NO.	DATE	LINE	DEPARTMENT	MACHINE
<input type="checkbox"/>	141	23-09-2024	Ujcell	Production	SPL90 BC
<input type="checkbox"/>	142	23-09-2024	Ujcell	Production	Compact Auto
<input type="checkbox"/>	143	23-09-2024	Ujcell	Production	SPL70 BC Auto
<input type="checkbox"/>	144	23-09-2024	Ujcell	Production	Pursing
<input type="checkbox"/>	145	23-09-2024	Ujcell	Production	SI125 Auto
<input type="checkbox"/>	146	23-09-2024	Ujcell	Production	SPL90 BC
<input type="checkbox"/>	147	23-09-2024	Ujcell	Production	Compact Auto
<input type="checkbox"/>	148	23-09-2024	Ujcell	Production	SPL100 BC
<input type="checkbox"/>	149	24-09-2024	MD	Production	TY SUB ASSEMBLY
<input type="checkbox"/>	150	24-09-2024	LD	Production	SLIP YOKE ASSEMBLY

HD

LD

MD

NL

PL

UJ

1 2 3 4

1 2 3 4

1 2 3 4

1 2 3 4

1 2 3 4

1 2 3 4

5 6 7 8

5 6 7 8

5 6 7 8

5 6 7 8

5 6 7 8

5 6 7 8

ME

MAINT.

Q.A.

STORE

VEND.

TODAY

TIME (Hour)

	FALLEN PART	20	Completed	
	FALLEN PART	10	Completed	
	FALLEN PART	15	Completed	
	IT SERVICE FAIL	10	Completed	
	OPERATOR NOT WORKING AS PER SWCT	20	Completed	
	Needle housing broke while vehicle testing	1156.5167236328	Completed	
	Welch plug missing in YG8 Drive Shaft Assembly	0	Reset	

Shop Floor Management

- Shop Floor Management refers to the systems and processes used to supervise and optimize daily operations on the production floor. It emphasizes real-time visibility, communication, and problem-solving where value is created.

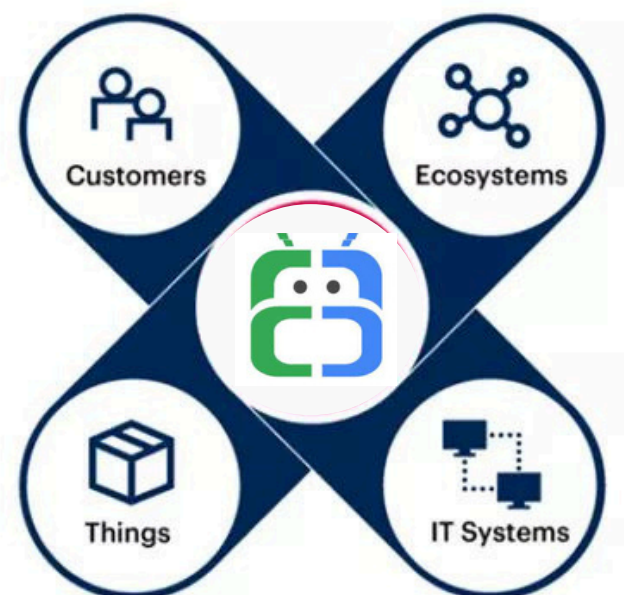
Industry Automation Services & Solution

At Greentinsolution, we recognize the pressing demand for Industry Automation. Drawing from valuable experience and feedback, we proudly offer comprehensive Industry 4.0 solutions all under one roof. Our services include

RPA & BI Tools

Epsibot

Optimize decision-making processes with the assistance of BI tools. Maximize efficiency & minimize effort through Robotic Process Automation (RPA).



Salesforce Services



Venda4S

A specialized Salesforce Services company, we offer Managed and Staffing services, achieving exemplary customer satisfaction ratings by providing tailored solutions encompassing customization, optimization, integrations, and support through our expert team. Proficient across various Salesforce Clouds, including Sales, Service, Marketing, and Financial.

IoT, Embedded & Industry 4.0

myIoT

IoT solutions help build massive networks of IoT devices, reducing complexity, ensuring device efficiency, and driving innovation across industries looking for growth opportunities and operational efficiencies.



Few of our Esteemed Clients



adani



CG Power and Industrial Solutions Ltd.

GABRIEL
Gabriel India Limited



asianpaints

MAGNA



DCM SHRIRAM
Growing with trust

SCHWING
Stetter

Simpson & Co. Ltd

ANAND »

KERRY

MAHLE

Haldex

HIGHWAY

ROOP
Roop Polymers Ltd.

Mando



GAR

ANCHEMCO

ANSYSCO

MICRO TURNERS

DANA SPICER
Drivetrain Products

SANDEN
Delivering Excellence

ADVIK
HI-TECH PVT. LTD.

GENAU
EXTRUSIONS

ECOCAT INDIA PVT. LTD.
VICAT
Technologies for Clean Environment



SATA

KENMORE

SHANTI
FOUMACH
PRIVATE LIMITED

AM eM
ANAND Mando eMobility



POWER

CW
CARRIER WHEELS PVT. LTD.

MSS India Pvt. Ltd.

OMAX

KISWOK
Engineering Better Tomorrows

Ami Polymer
"Sealing Expert in Silicone"

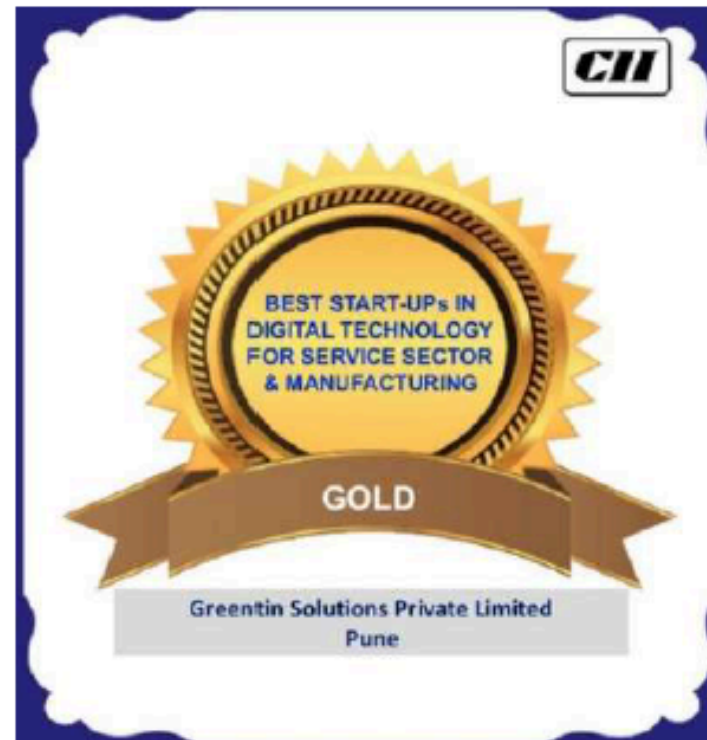


Our Achievements

Platinum Award

by CII – Confederation of Indian Industries

Best Startup for Digitization of Mnaufacturing and Service Industries



Gold Award

by CII – Confederation of Indian Industries

Best Startup for Process Transformation for Mnaufacturing and Service Industries

Performance

The statistics supporting reach and acceptance of the product by market. It's being used by all well known organizations and groups



☑ Clients

100 Plus

Happy clients who are getting the best output year on year

☑ Users

70,000 Plus

Figure shows the depth of user engagement level

☑ Total Kaizens

2,00,000 Plus

The output that organizations are proud of



my
eNovationTM

Skill Matrix

Employee Skill Matrix & Optimization Tool

Let's Go

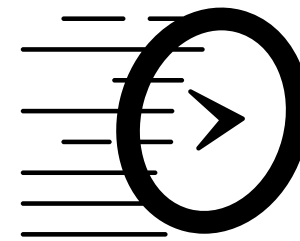


About Skill Matrix Module

- **Boosts productivity**
- **Real Time Tracking**
- **Live Skills Matrix Dashboard**
- **Notification Sysytem**
- **Real Time Skill Gap Analysis**
- **Online Assesment**
- **Boosts internal communications**
- **Training Management**
- **Live Dashboard / Reports**
- **Skill Report Card**
- **Enhance Monitoring & Transperancy**
- **Repository Management**

The Skill Matrix is a strategic tool utilized by organizations to systematically map, evaluate, and manage the skills of their workforce. It functions as a visual framework that captures employees' competencies and expertise across a range of tasks, roles, and responsibilities within the organization. By offering a clear and detailed view of current skill levels, the Skill Matrix facilitates the identification of skill gaps, the planning of targeted training programs, and the optimization of workforce deployment.

Benefits



Speed up
Process Execution



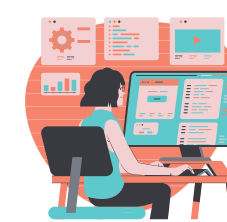
Reduced Process
Execution Cost



Rapid ROI



High Employee
Engagement



Easy Centralized
Monitoring



Accuracy

Why myeNovation?

- Builds CONTINUOUS IMPROVEMENT Culture
- Engage everyone to actively participate in the GROWTH of ORGANIZATION
- Guaranteed increment in Productivity, QUALITY & SAVING
- Quick ROI by reducing PAPER COST & HUMAN RESOURCE COST
- Easy decision making due to Total TRANSPERENCY & overall CONTROL on the process



Key Features

- **Skill Matrix End to End Digital Way:**
 - A digitized, easily accessible platform for managing and viewing the skill matrix.
- **OJT Planning and Tracking:**
 - Enables efficient planning and monitoring of On-the-Job Training (OJT) for employees.
- **Online Skill Level Assessments:**
 - Facilitates the online assessment of employee skill levels to ensure accurate evaluations.
- **Skill Gap Analysis:**
 - Identifies discrepancies between current skills and those required, allowing for targeted development.
- **Online Skilling Tests and Certification:**
 - Facilitates online assessments and certifications, ensuring employees are properly qualified for their roles.

Why myeNovation Skill Matrix Platform

Key Role & Responsibilities

Team Lead

Upload OJT Plan

Upload OJT Checksheets submitted by the Trainer

View & download Certificates of OE

View assessment result of all the OE's

OE

View & Upload OJT check sheet on daily basis

Appear for online assessment

View assessment results

Download skilling certificate

Why myeNovation Skill Matrix Platform

Key Role & Responsibilities

Trainer

Approve OJT check sheet submitted by OE mark it complete

View & download certificate of all OEs

View Assessment result of all OEs

PTT / GL / Observer

View & download certificate of all OEs

View Dashboard ,Report, Skill Matrix

QA

Approves or reject products assigned for quality check

Why myeNovation Skill Matrix Platform

Key Provisions

Manage access to each role

Provision to set OE lead / Supervisor / Group Lead / PTT to specific cell

Provision to set Machine Index, require skill level, required trained work force & tolerance (%)

Provision to upload & modify Shift plan

Provision to upload test along with level, timeline, minimum passing score

Provision to upload OJT checksheet

Provision to upload Skill Certificate template

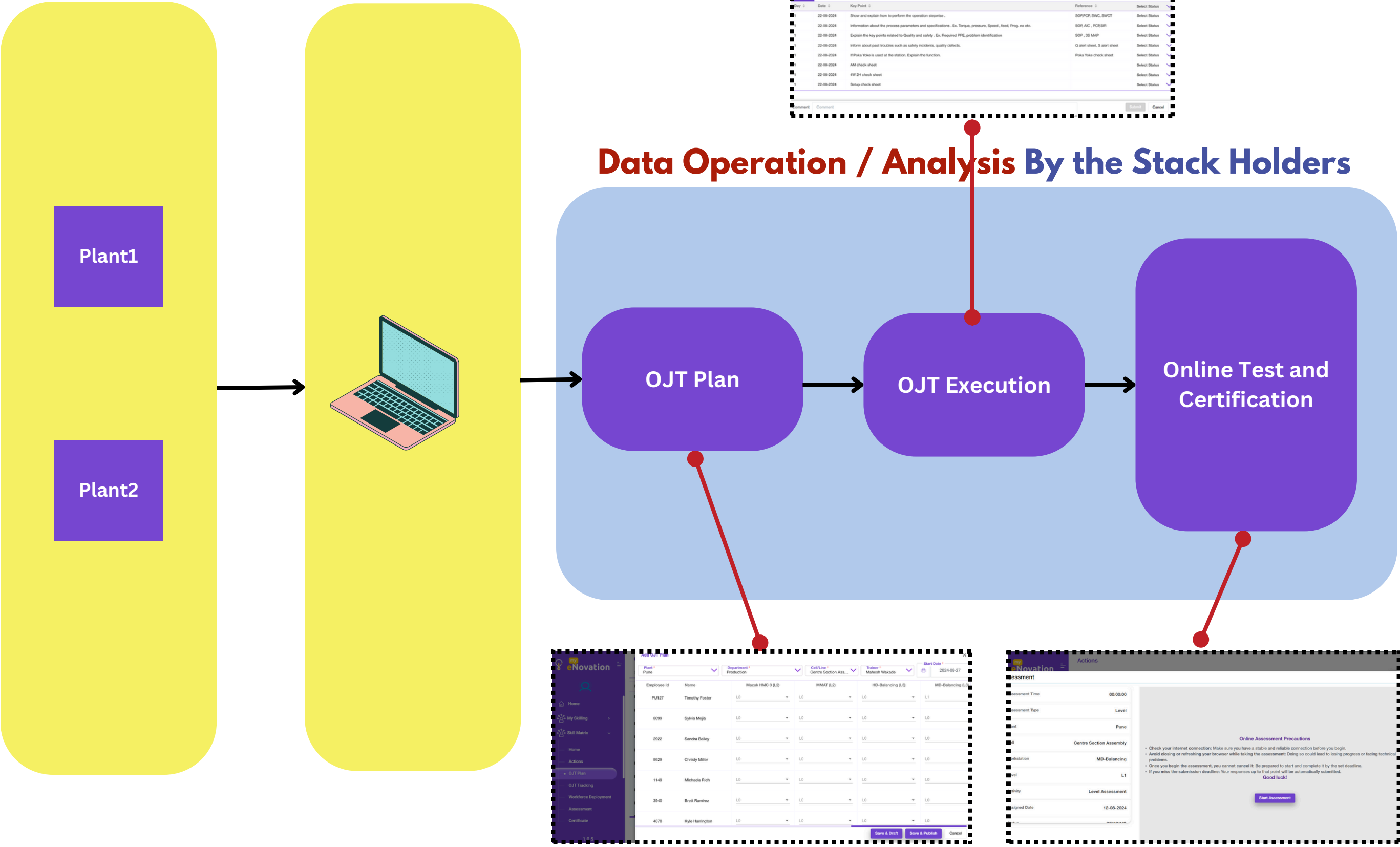
Modify work force deployment

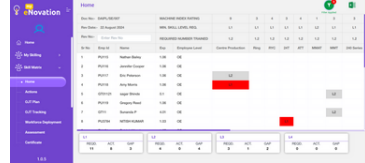
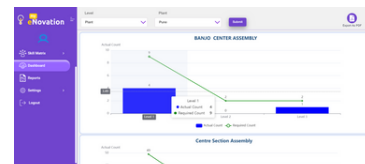

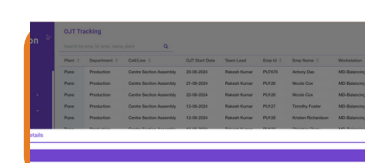
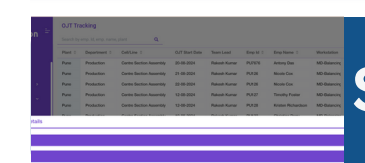
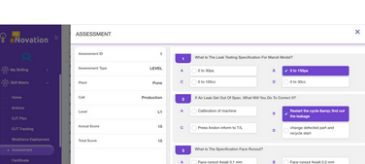

Key Benefits

- **Realtime Skill Gap Tracking and Identification:**
 - Enables immediate identification and resolution of skill gaps as they emerge.
- **Streamlined OJT Planning and Tracking for L1, L2, and L3:**
 - Simplifies the planning and monitoring of On-the-Job Training (OJT) for all levels (L1, L2, L3) through an integrated online portal.
- **Live Skill Matrix Data for Skill Level Monitoring:**
 - Provides real-time access to employee skill levels for accurate and up-to-date tracking.
- **Optimized Workforce Deployment and Shift Planning:**
 - Enhances workforce deployment and shift scheduling by leveraging current skill data.
- **Boosts productivity**
 - Identifies discrepancies between current skills and those required, allowing for targeted development. Skills tracking also ensures that workers are qualified to perform their job

Organization

Access Channel



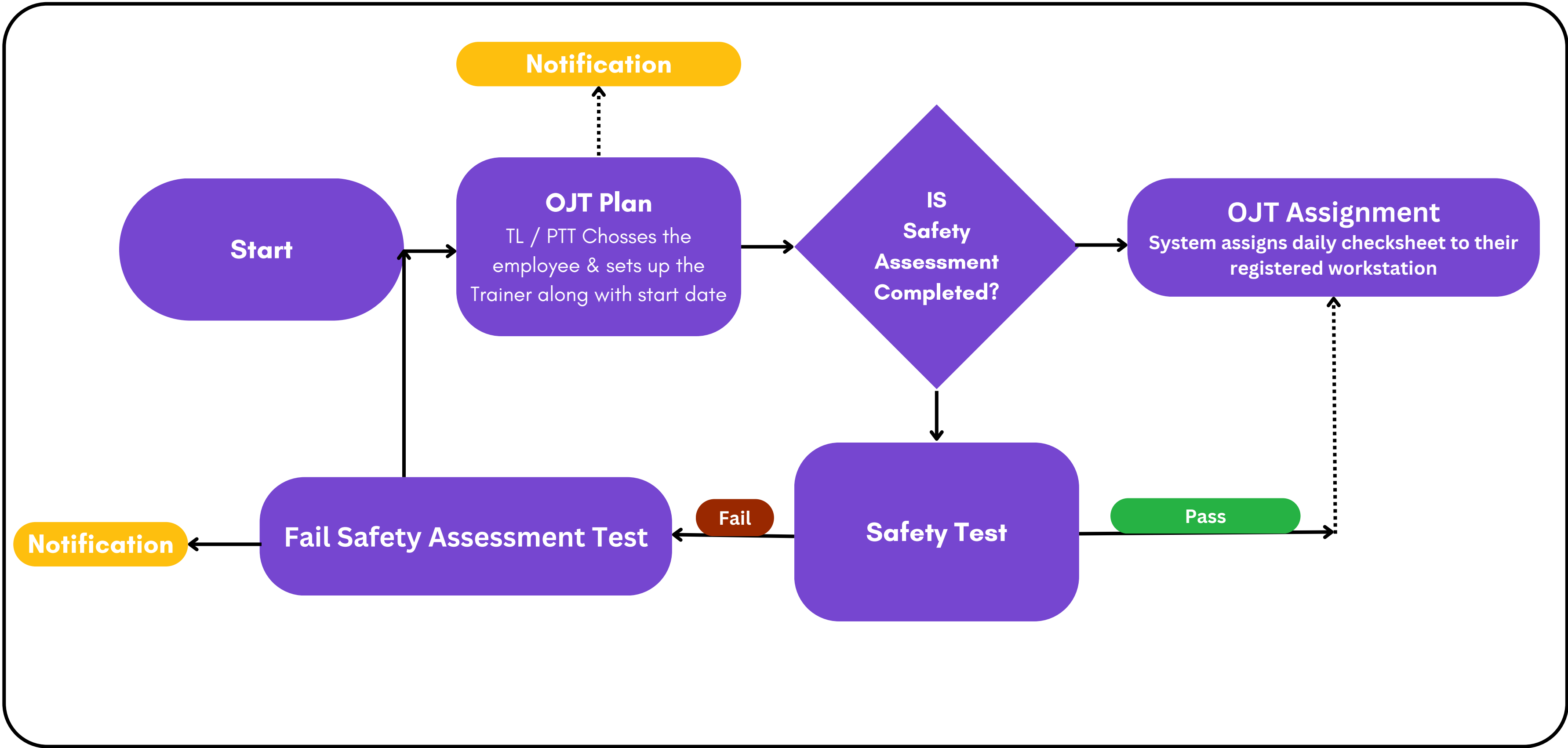
- Skill Level Tracking
- Dashboard
- Reports
- OJT Tracking
- Skill Gap Analysis
- Test Tracking
- Certificates



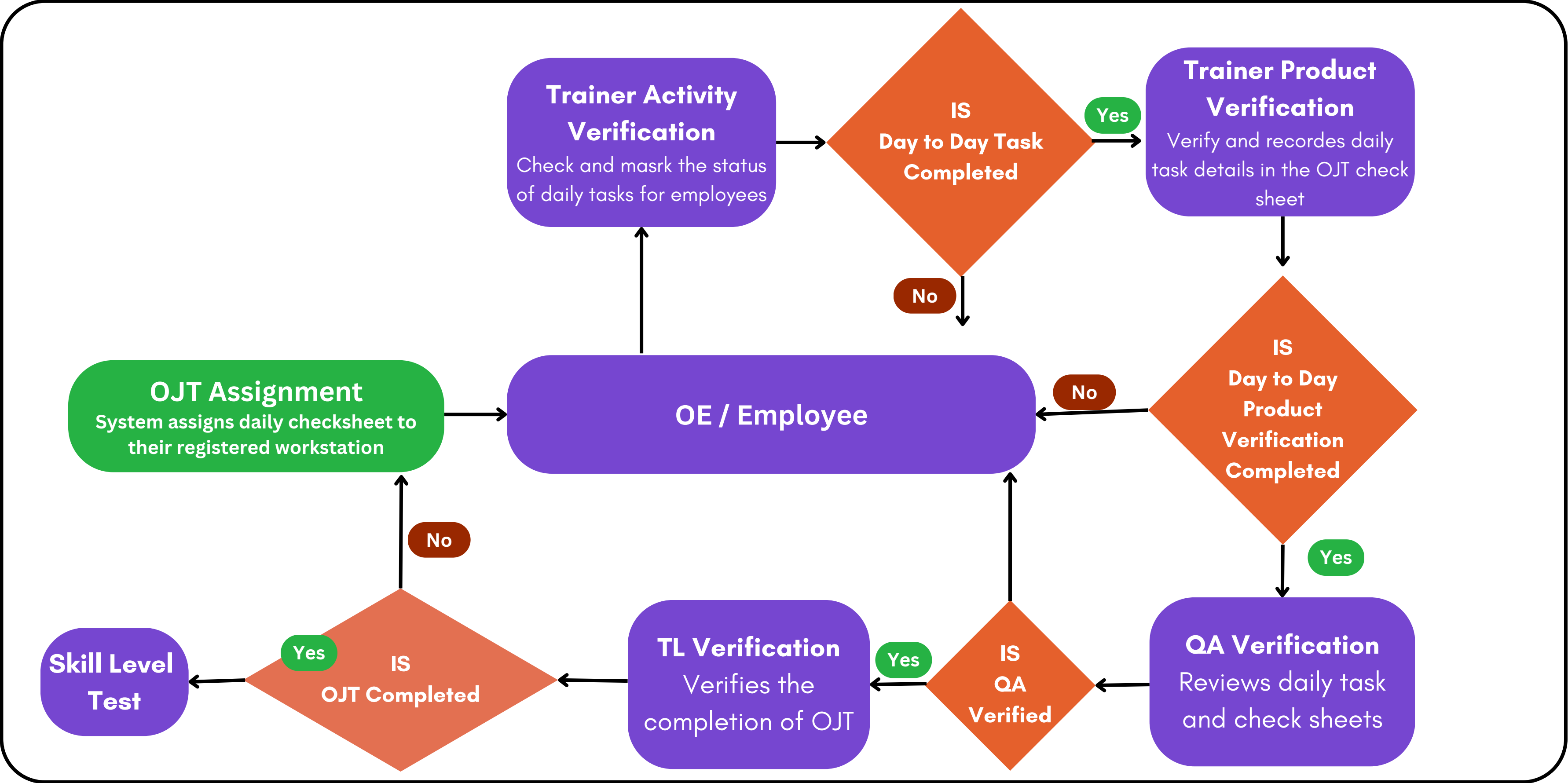
Application Capabilities

1. Team Lead will assign OJT plan to OE along with trainer.
2. OE will mark all the tasks completed including Theory and Machine Tasks. Once all tasks are completed, OE will submit the check sheet for verification.
3. Check sheet will be assigned to the trainer who was selected at the time of submitting the OJT plan.
4. Trainer will check and mark the task completion status against each task.
5. If any task is incomplete then the check sheet will be assigned back to OE
6. Once the trainer submits OJT status as completed then it will be assigned to TL for final verification.
7. In case if TL is not happy with completion then he may add comment and assign it back to OE for action.
8. OE will complete the work and submit the checksheet again which will be assigned to Trainer.
9. Trainer will verify it again and submit to TL
10. Finally TL will mark as OJT completed.
11. Once marked completed, test will be assigned to OE after 10 days since TL the day OJT status marked as completed
12. OE will complete the test.
13. If passed, he will get the certificate and if failed OJT will be reassigned.

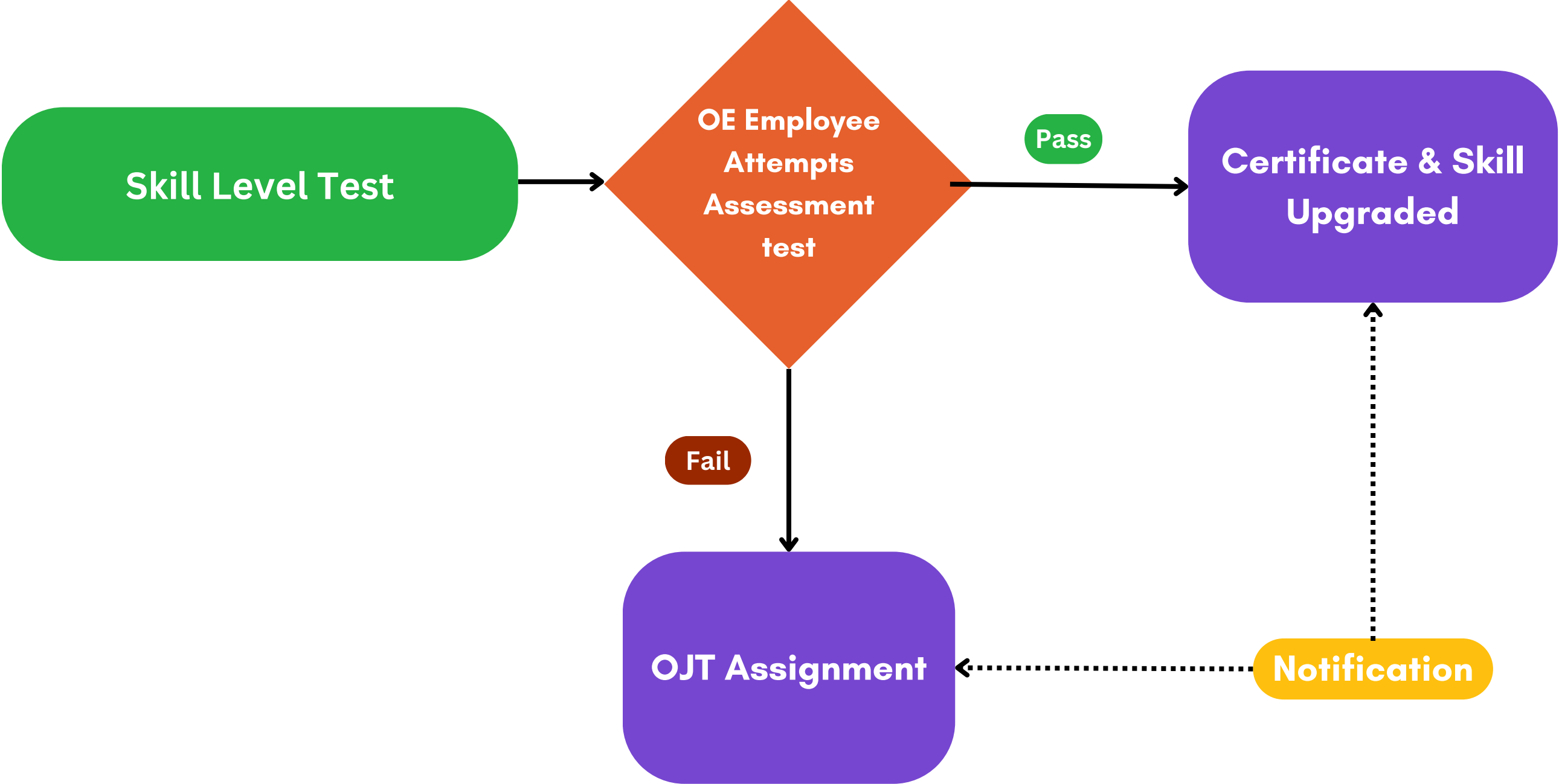
Workflow



Workflow

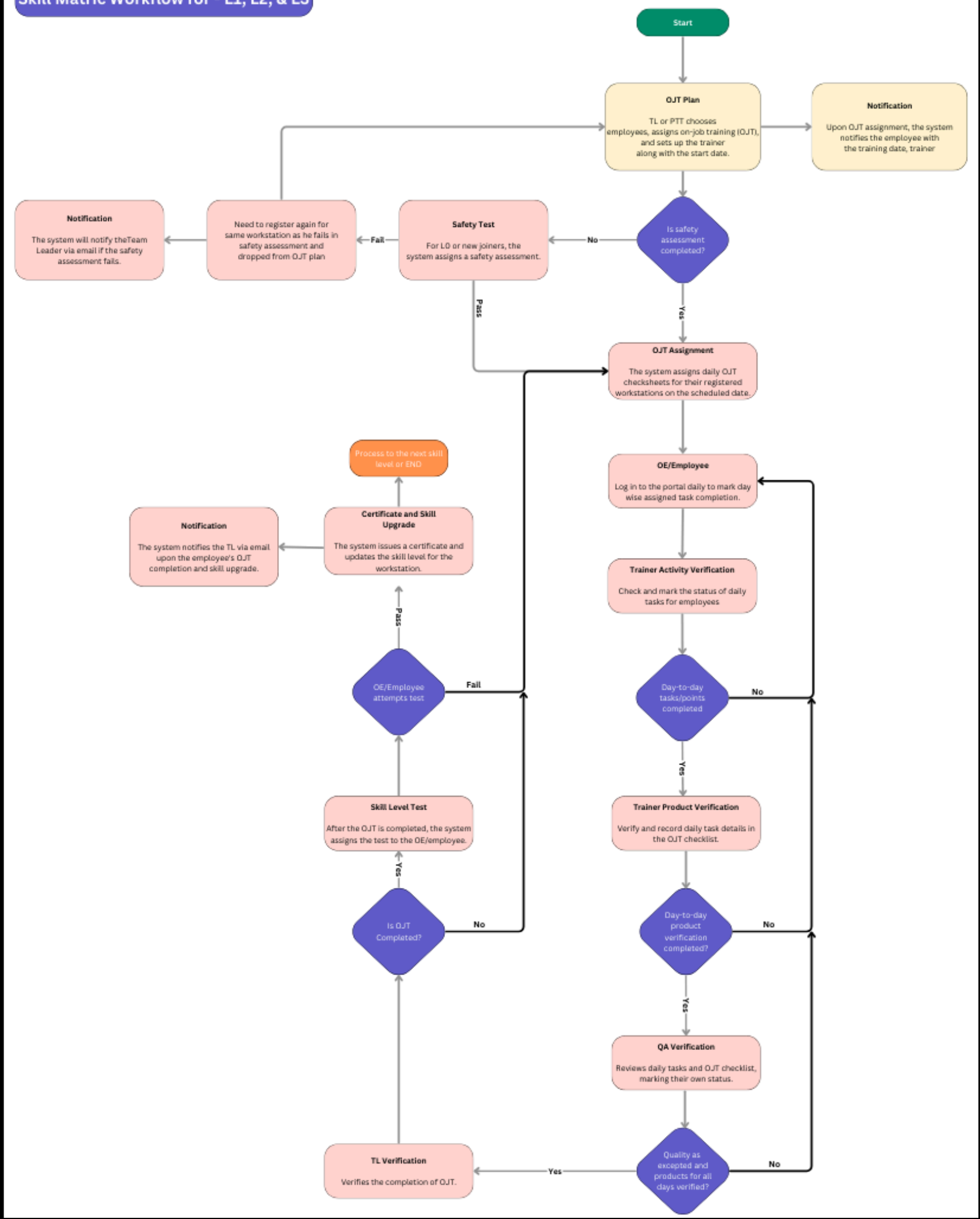


Workflow



Workflow

Skill Matric Workflow for - L1, L2, & L3



Monitoring
Effectiveness / Sustenance



Multilevel
Dashboard & Reports

Organization
Level

Plant
Level

Cell
Level

Home

Doc No:- DA IPL/SE/007

MACHINE INDEX RATING

10.34

123

123

101

Rev Date:- 06 November 2024

MIN. SKILL LEVEL REQ.

L1

L1

L1

L1

Rev No:-

REQUIRED NUMBER TRAINED

1.2

1.2

1.2

1.2

Sr No	Emp Id	Name	Exp	Employee Level	CRB	Packaging Station	Quality Check Station	Welding Worksta
1	3456	Namdev Misal	1.06	OE			L1	
2	9999	Nitin Patil	1.01	OE		L1		
3	8989	Dhananjay Patil	1	OE		L1		
4	9090	Swapnil Patil	1.01	OE		L1		
Actual No Trained					0	3	1	0
Team Leader Skill Level								

L1

REQD. 5

ACT. 4

GAP 1

L2

REQD. 0

ACT. 0

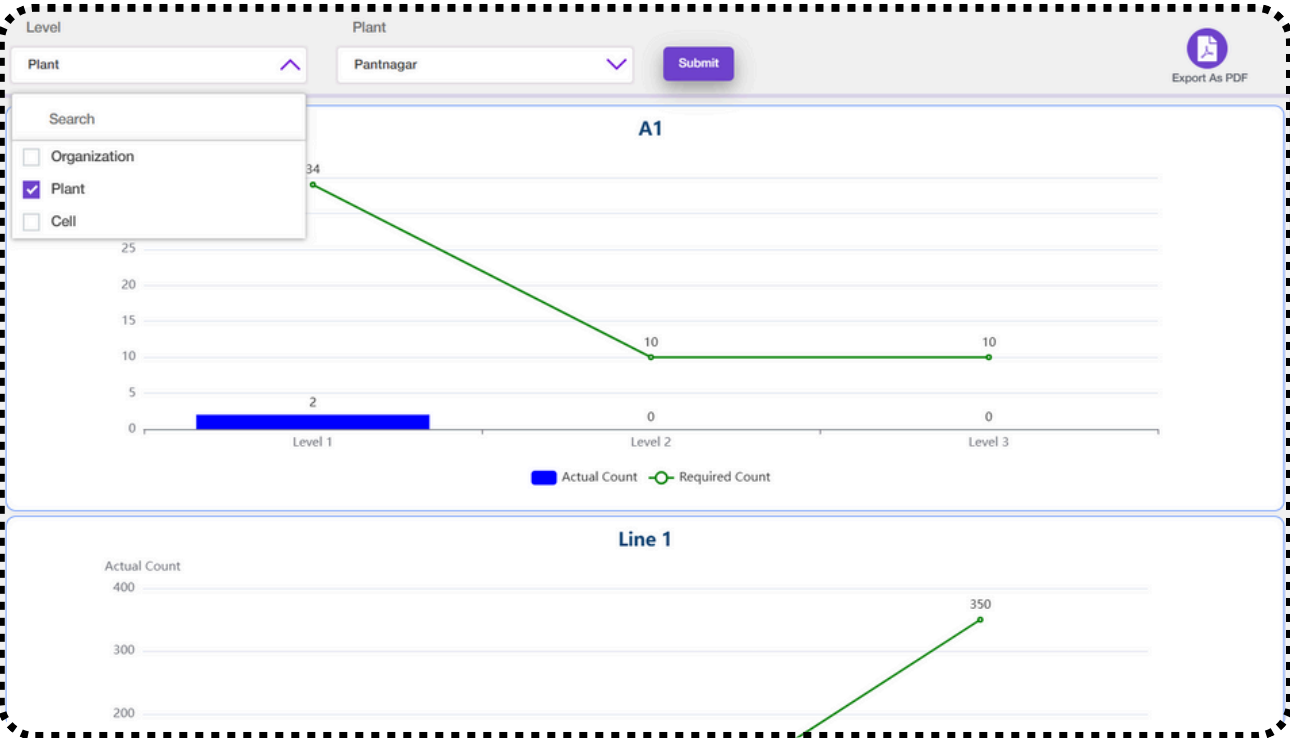
GAP 0

L3

REQD. 0

ACT. 0

GAP 0



Reports

Report Type

Assessment Success Rate

From Date

2023-11-06

To Date

2024-11-06

Generate Report

Search

☒ Assessment Success Rate

☐ Cell Adherence Status

☐ Completion Discrepancy Report

☐ Employee Performance Analysis

☐ Monthly Skill Matrix Report

☐ Multiskilling Status At Cell Level

P	Line	Level	Pass Count	Fail Count	Total Count
P	Centre Section Assembly	L1	25 (96.15%)	1 (3.85%)	26
P	ility	L1	9 (56.25%)	7 (43.75%)	16
P	inistration	L1	4 (80%)	1 (20%)	5
P	Centre Section Assembly	L2	4 (100%)	0 (0%)	4
Pune	DRIVU CENTER ASSEMBLY	L1	2 (50%)	2 (50%)	4
Pune	Sales and Marketing	Line Two	1 (50%)	1 (50%)	2
Pune	Quality Assurance	Quality	1 (100%)	0 (0%)	1
Pune	Production	Centre Section Assembly	1 (100%)	0 (0%)	1

Reports

Report Type

Monthly Skill Matrix Report

From Date

2023-11-06

To Date

2024-11-06

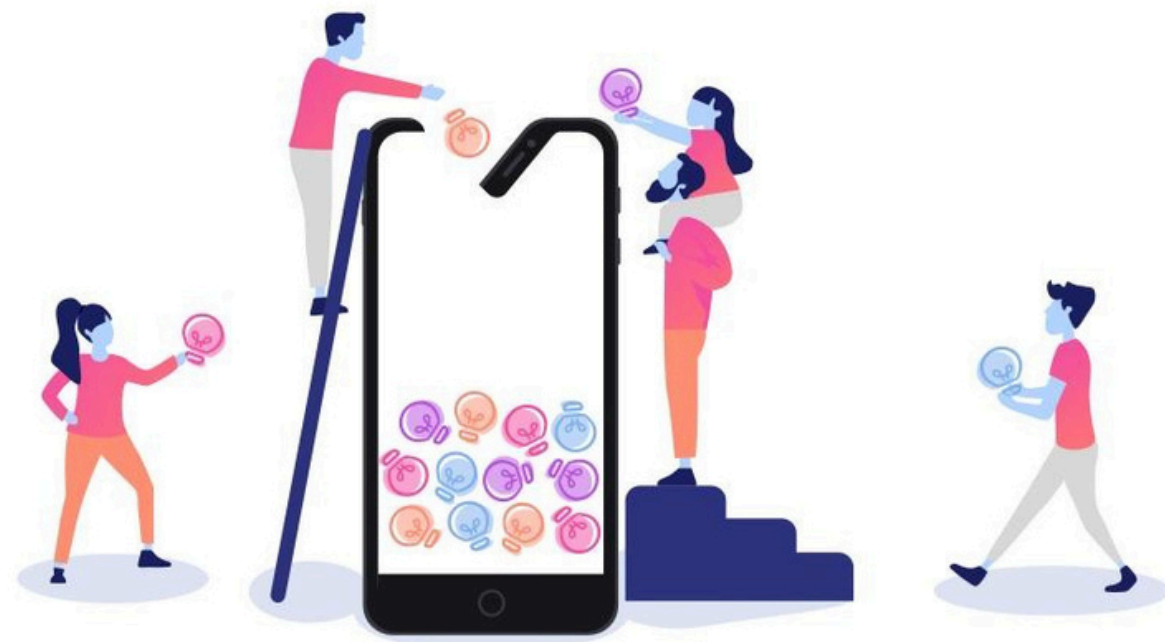
Generate Report

Monthly Skill Matrix Report

Plant	Department	Cell/Line	Level	Plan Count	Actual Count	Workstation Name	Month Year
Pune	Production	Centre Section Assembly	L1	42	12 (28.57 %)	Centre Production	Apr 2024
Pune	Production	Centre Section Assembly	L1	13	9 (69.23 %)	Centre Production	Jul 2024
Pune	Production	Centre Section Assembly	L2	19	6 (31.58 %)	MD-Balancing	Aug 2024
Pune	Production	Centre Section Assembly	L1	16	4 (25 %)	MD-Balancing	Oct 2024
Pune	Quality Assurance	Quality	L1	22	4 (18.18 %)	IPT	Mar 2024
Pune	Administration	Administration	L1	5	3 (60 %)	CRB	Jul 2024
Pune	Production	Centre Section Assembly	L1	16	3 (18.75 %)	Centre Production	Jun 2024
Pune	Quality Assurance	Quality	L1	28	3 (10.71 %)	Die Casting	Feb 2024
Pune	Quality Assurance	Quality	L1	12	2 (16.67 %)	TurboTorque Balancer	Nov 2023
Pune	Production	Centre Section Assembly	L2	7	2 (28.57 %)	Mazak HMC 3	May 2024
Pune	Quality Assurance	Quality	L1	4	2 (50 %)	QSAD	Apr 2024
Pune	Quality Assurance	Quality	L1	4	1 (25 %)	IPT	Oct 2024
Pune	Administration	Administration	L1	6	1 (16.67 %)	Packaging Station	Oct 2024

Thank You

For, giving us an opportunity



 Website

www.myeNovation.com

 Telephone

+ 91 9009231818

+91 77200 35299

+91 8459383737

 Email

nishant@myenovation.com

raj.dubal@greentinsolutions.com

pallavi@greentinsolutions.com